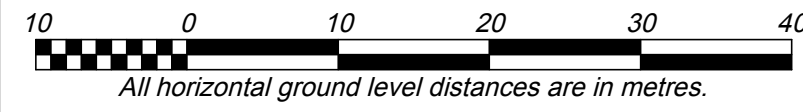


**BARE LAND STRATA PLAN OF LOT A, SECTION 27, SOOKE DISTRICT, PLAN EPP92354.**



BCGS 92B.042

The intended plot size of this plan is 864mm in width by 560mm in height (D Size) when plotted at a scale of 1:500.

Grid bearings are derived from differential carrier phase GNSS observations and are referred to the central meridian of UTM Zone 10 North.

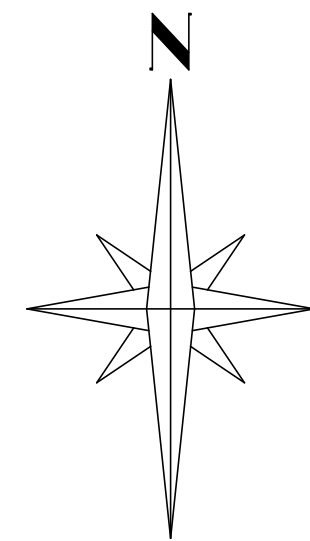
The UTM coordinates and estimated absolute accuracy achieved are derived using GNSS dual frequency observations and processed using the Precise Point Positioning application provided by Natural Resources Canada.

This plan shows horizontal ground level distances, unless otherwise specified. To compute grid distances, multiply ground level distances by the average combined factor of 0.999632. The average combined factor has been determined based on an ellipsoidal elevation of 16.0 metres.

**LEGEND**

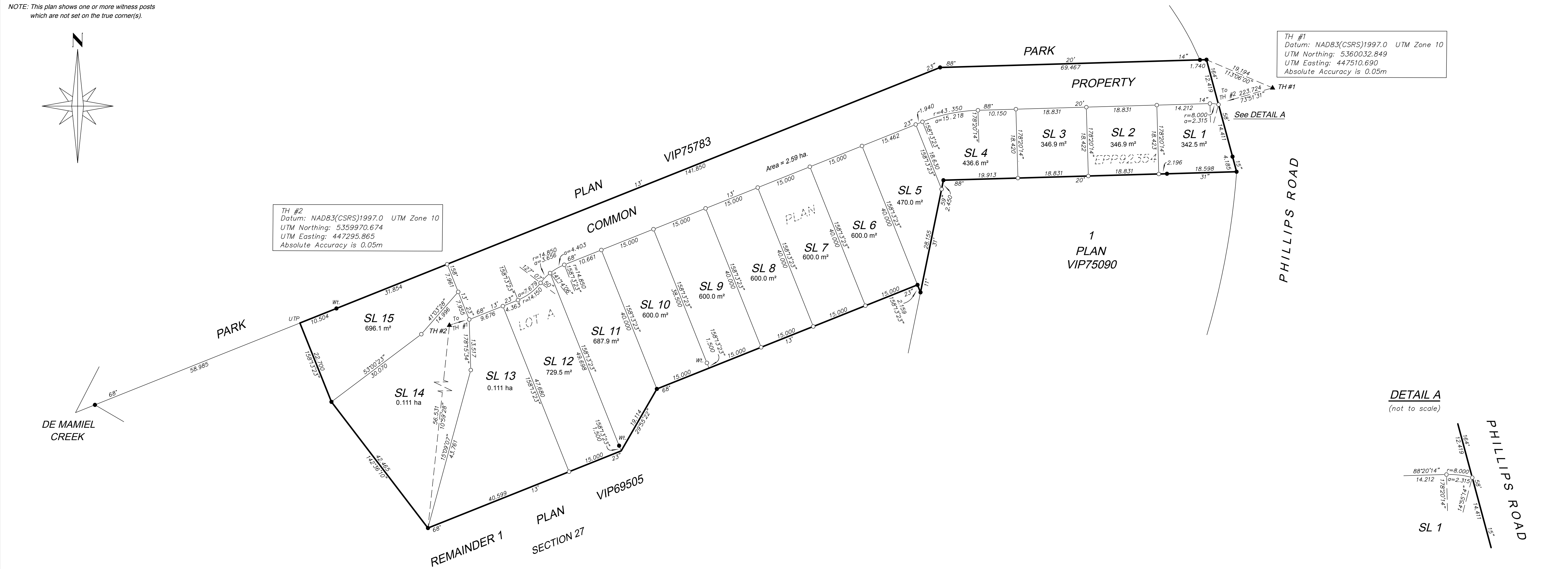
- Found Placed
- ▲ Denotes Traverse Hub
- Denotes Standard Iron Post
- Denotes Unable To Post
- UTP Denotes Unable To Post
- SL Denotes Strata Lot

NOTE: This plan shows one or more witness posts which are not set on the true corner(s).

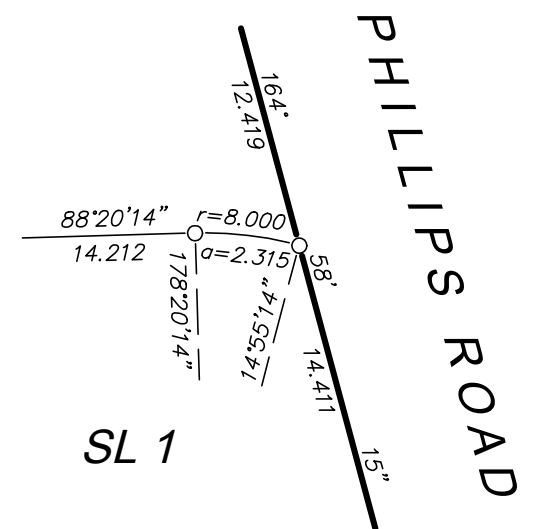


TH #2  
Datum: NAD83(CSRs)1997.0 UTM Zone 10  
UTM Northing: 5359970.674  
UTM Easting: 447295.865  
Absolute Accuracy is 0.05m

TH #1  
Datum: NAD83(CSRs)1997.0 UTM Zone 10  
UTM Northing: 5360032.849  
UTM Easting: 447510.690  
Absolute Accuracy is 0.05m



**DETAIL A**  
(not to scale)



Address - Not available.

File: 1026PB-W145  
Date: W145-KELLY-ST1  
**Island Land Surveying Ltd.**  
#117-693 Hoffman Avenue  
Victoria B.C. V9B 4X1  
TEL 250.475.1515 FAX 250.475.1516  
www.islandsurveying.ca OC

This bareland strata plan lies within the District of Sooke and the Capital Regional District.  
This bareland strata plan lies within the jurisdiction of the Approving Officer for the District of Sooke.  
The field survey represented by this plan was completed on the 30th day of April, 2019  
Peter I. M. Broeren, BCLS 745